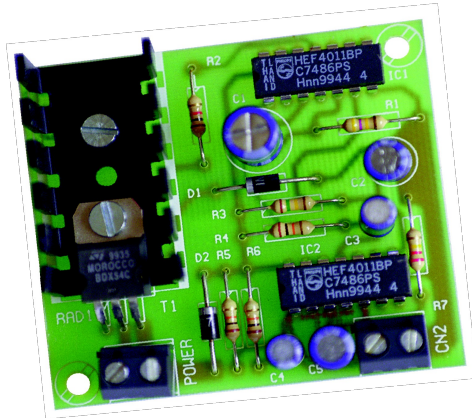


AL-8 ALARM FOR CAR



CHARACTERISTICS

Voltage	12V D.C.
Minimum consumption	20 mA
Maximum consumption	40 mA
Entrance time	15 sec.
Exit time	10 sec.
Alarm time	1 min. 30 sec.
Maximum output load	2 A
Protection against polarity inversion	yes
Power supply	battery 12
sizes	61 x 54 x 20 mm.

The AL-8 module is an alarm specially design for car. It has independent entrance and exit times. It has a transistor output, allowing to connect klaxon or any other load lower than 2 A. It has a protection against polarity inversion and terminal for its connection.

Power supply. The AL-8 circuit had to be supplied by a 12 V D.C. Power supply.

Connect the positive of the power supply to the positive terminal indicated in the wiring map, then connect also the negative of the power supply to the negative terminal indicated in the circuit.

Verify that the assembly has been correctly done.

Operating. Seeing the general wiring map, you have to connect at the output a klaxon, light, o any other load. Do not forget that this load could not be superior than 2 A.

If you instal load with polarity, you have to correctly connect both positive and negative terminals. Install a switch to activate the module as well as a sensor for the car's door. As swicth to could use any switch like a key contact or remote control with relay output.

Once the assembly is done, you have to close the activation switch and the alarm will be connected. Then the exit time (10 sec) start allowing to leave the car before the module detect the door contact and then activate the alarm. After this operation, the module will wait for the next opening door.

When the car's door is opening the entrance time will start allowing you 15 sec. To disactivate the switch to avoid the alarm activation. The alarm time (once activated)) is 1 min. 30 sec. And you have to switch off to disactivate the alarm.

Load. Output connection. The module has a transistor output except halogen light, you could connect any other load inferior than 2 A. (maximum consumption) as klaxon, car's light, etc.

